

Inter Entity Trade

For Sage 300 (Accpac)



sage | Development Partner Gold



Do you manage multiple entities which trade with each other?
 Are you struggling to keep everything in balance?
 Are efficiency and growth impeded by processing routine transactions?

WHAT IS INTER ENTITY TRADE?

Developed by Orchid Systems, Inter Entity Trade automates the flow of transactions in Sage 300 (Accpac) when partner companies, branches, divisions etc buy and sell products or perform services between each other. Reciprocal documents are created according to business rules you set up: when you initiate a transaction in one company, Inter Entity Trade makes the corresponding entries in the other company. No need to duplicate it for the other company.

For example, when Company A (Source company) sells to Company B (Target company), Inter Entity Trade automates the generation of purchase order and goods receipt documents in Company B which correspond to the OE sales order and OE shipment documents in Company A, and it generates the PO/AP Invoice after the OE/AR Invoice is issued. This is also done with Purchase Orders initiating OE Orders, invoices and credits too, for example.

For Services, if Company B carries out services for Company A, either Company can raise the invoice and Inter Entity Trade issues the corresponding AR or AP invoice for the other party as appropriate. The result saves time, increases accuracy and efficiency. Read more in Key Features below.

Globalization enables organizations to expand and operate across borders. This results in a proliferation of related companies trading with each other and the need to keep track of items and services, purchase and sales orders, shipments and receipts, invoices and taxes. Inter Entity Trade automates this and increases the accuracy of data, improves efficiency and provides better visibility across a group of companies.

BENEFITS

- Enhances productivity and efficiency.
- Automates and streamlines business processes.
- Improves visibility of operations across a group of companies.
- Large time savings from eliminating duplicating entries and checking them.
- Input transactions once and replicate across companies.
- Increased accuracy from automated processes.
- Simplifies collaboration in complex organisations.

Posting Seq	Organization ID	Trade Transaction Type	Account Code	Source Batch N	Source Docume	Target Document Batch	Target	Transaction
29	ORCIN1	A/R Invoice to A/R Invoice	9997	68	2	53	1	Exported
29	ORCIN2	A/R Invoice to A/P Invoice	9998	68	3	57	1	Exported
30	ORCIN1	A/P Invoice to A/R Invoice	9996	55	1	67	1	Exported
30	ORCIN2	A/P Invoice to A/R Invoice	9997	55	2	67	1	Exported
30	ORCIN3	A/P Invoice to A/R Invoice	9998	55	3	67	1	Exported

(Source and Target transactions logged)

Order No. 0RD000000000062
 Customer No. 1200
 Order Date: 29/10/2020
 Order Type: Active
 Ship-To Location: Central warehouse - Seattle
 Deliver By: 29/10/2020
 Ship Via: CCT
 Description: Order for goods - 3 items from ORCIN1

Lin.	Type	Item No. / Misc. Charge	Description	U.S.	Price List	Location	Deliv
1	Item	A1-103/0	Fluorescent Des...	USA	1	29/11	
2	Item	A1-105/0	13W Mini Fluore...	USA	1	29/11	
3	Item	A1-320/0	50W/12V Halog...	USA	1	29/11	
4	Item	A1-400/0	Desk Note Book	USA	1	29/11	

Order Subtotal: 0.00 USD

(OE Order entered)

PO Number: P000000030
 Vendor Number: ENTITY1
 PO Date: 29/10/2020
 PO Type: Active
 Ship-To Location: Ship-Via
 Vendor Acct. Set: USA
 Description: ADMIN-ORCLTD-Order for goods - 3 items from ORCIN1

Lin.	Completed	Item Number	Item Description	U.S.	Location	Drop-Ship	Quantity Ordered	U.S.	Unit of Measur
1	No	A1-105-0	13W Mini Fluorescent Bulb	1	No	No	15	EA	
2	No	A1-320-0	50W/12V Halogen Bulb	1	No	No	14	EA	
3	No	A1-400-0	Desk Note Book	1	No	No	13	EA	

Order Subtotal: 520.31 USD

(Associated PO created)



Provide **visibility** across operations using standard **business** processes
Saves doubling up on **data entry**
Work **smarter** not **harder**

KEY FEATURES

System

- Map which companies will trade with each other.
- Map information to flow through from document to document.
- Comprehensive audit logging to ensure that all transactions are accounted for.
- Optionally allows bi-directional processing. For example if POs in Company 1 against Vendor 2 automatically created SOs in Company 2 against Customer 1, then you can either "Receive" the PO which would cause the SO to be shipped OR Ship the SO which will cause the PO to be receipted. In prior versions, this automation could only go "one-way".

Trade AP to AR, or AR to AP

- Map AP Vendor in Source company to AR customer in Target company (or vice versa).
- Optionally specify a multiplier to mark up or mark down the Target document.
- Optionally include Sage 300 Project and Job Costing fields to be transferred from Source document to Target document.
- Map Source document GL Account to Target document GL Account.

Create transactions from:

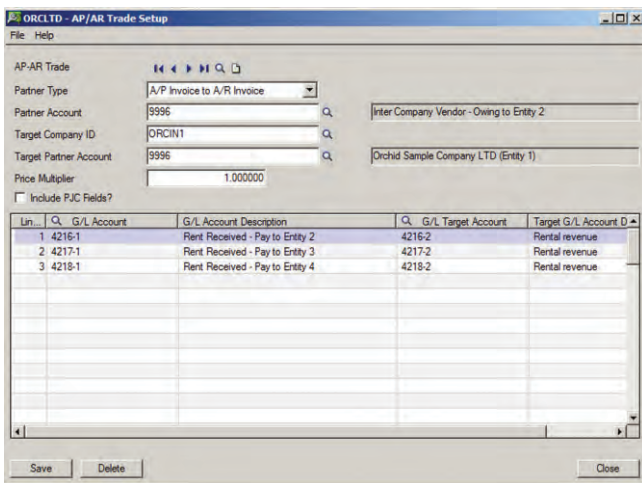
- AP Invoices to AR Invoices.
- AP Credit Notes to AR Credit Notes.
- AR Invoices to AP Invoices.
- AR Credit Notes to AP Credit Notes.

Trade OE to PO, or PO to OE

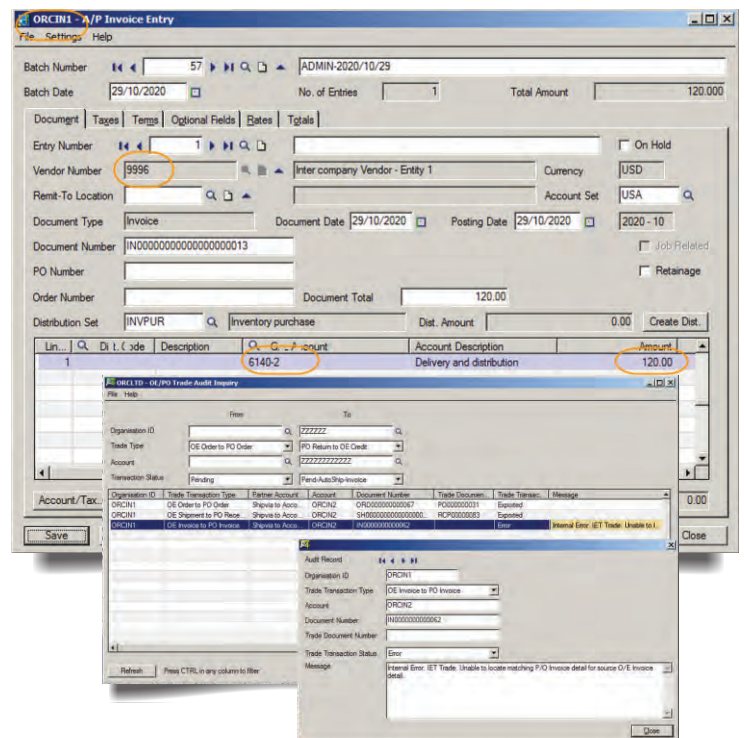
- Account to Account mapping. Map OE customer in Source company to PO vendor in Target company (or vice versa).
- "Ship Via" to Account Mapping. Map OE "Ship Via" in Source company to PO Vendor in Target company (or vice versa).
- Optionally include Sage 300 Project and Job Costing fields to be transferred from the Source document to the target document.
- Optionally include Sage 300 IC Serial and Lot Number fields to be transferred from the Source document to the Target document.
- Optionally override the category on the Target OE documents to easily identify intergroup transactions for consolidated reporting.
- Optionally override the location on the Target OE or PO documents to easily identify intergroup transactions for consolidated reporting.
- Optionally map IC items across companies if not identical.

Create documents from:

- OE Orders to PO Orders.
- OE Shipments to PO Receipts.
- OE Invoices to PO Invoices.
- OE Credit Notes to PO Returns.
- PO Orders to OE Orders.
- PO Receipts to OE Shipments.
- PO Invoices to OE Invoices.
- PO Returns to OE Credit Notes



(AP/AR setup between 2 companies)



(Posting errors shown in Audit Log)

MINIMUM REQUIREMENTS

Inter Entity Trade 2017 requires Sage 300 (Accpac) 2017 System Manager, General Ledger, Accounts Receivable and Accounts Payable. Inter Entity Trade optionally works with Sage 300 2017 Order Entry, Inventory Control and Purchase Orders, and Orchid Inter Entity Transactions.

Further details from your Sage Software Solution Provider.

Copyright © 2016 Orchid Systems. All rights reserved.
All trademarks are registered trademarks or trademarks of their respective companies.



Suite 2 / 273 Alfred Street, North Sydney, NSW, Australia, 2060
Phone: +61 2 9099 1077 | Email: info@orchid.systems

